



*Short rise
vertical lift*

models
- ENI-nin
- ENI-plus



enier[®]

Elegance, Sturdiness, Reliability ... the definition of ENI short rise vertical lifts



The **eni** short rise vertical lift range is conceived and designed to overcome uneven floor levels. The **nin** model is for a distance of up to 1.80 meters, while the **plus** model reaches an elevation of up to 3.00 meters. It is user friendly and can be used by unaccompanied passengers requiring a wheelchair.

The **eni-nin** lift is an ideal way of overcoming architectural barriers posed by stairs at the entrances of public buildings or apartment block lobbies, while the **eni-plus** installed with a glass structure is elegant and practical, perfect for reaching the top floors in shops, offices, restaurants, hotels, cultural institutions, theatres, etc. as well as family homes.

 **enier**[®]



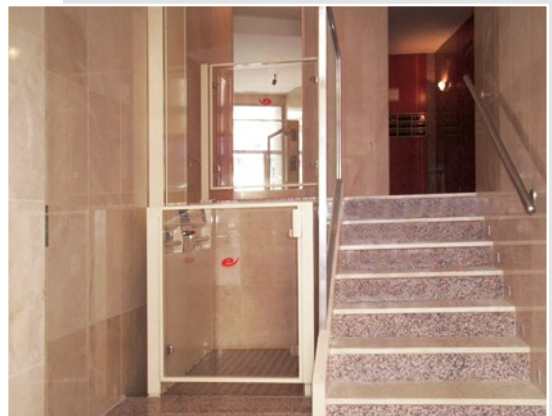
ENI facilitates mobility and independence in any environment

Easy to install, many installations do not require building work, the guide is fixed to the wall and a small ramp provides access to the platform. Other installations require minor changes to steps and handrail as well as a small hollow for lift. The installation can be carried out in a few hours and the **eni** will be ready for use.

Warranty and Service

The **eni** small rise lift is the solution to many customer needs and requirements. It is a high quality product, which brings together the knowledge and experience accumulated over many years, providing a convenient and efficient lift system for people with reduced mobility.

The post-sales service provided by **ENIER** and its network of partners offer you preventive maintenance for the installation, as well as fast permanent technical assistance you may require.



model **ENI**



With **ENI**, small differences in height are no longer an obstacle

The design is attractive and functional, no obstacles limit the view of the surroundings.

The eni fits perfectly in the most varied of locations, fully adapting to any environment or decor.

It is a practical, economical and easy solution to access higher levels. In most installations no major work is needed, as the small ramp fixed to the ground floor or on the base of the platform does not require a pit.

The guide is easily fixed to the wall. It is frontally protected to avoid any entrapment with moving lift parts.

The passenger compartment is closed on three sides, on one side there are buttons and hand grips, on

the other, a guardrail and on the third, a half-door with a safety lock, both panelled with polycarbonate or transparent glass or with opaque aluminium sandwich plate.

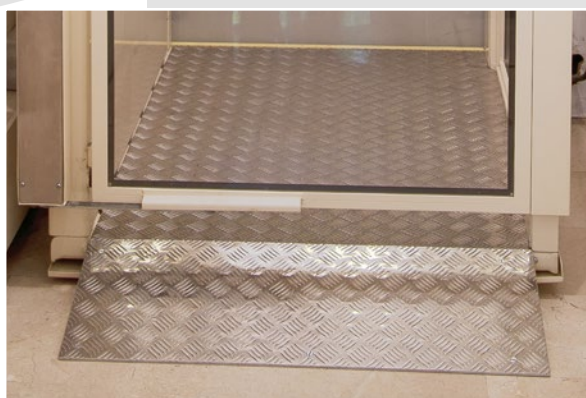
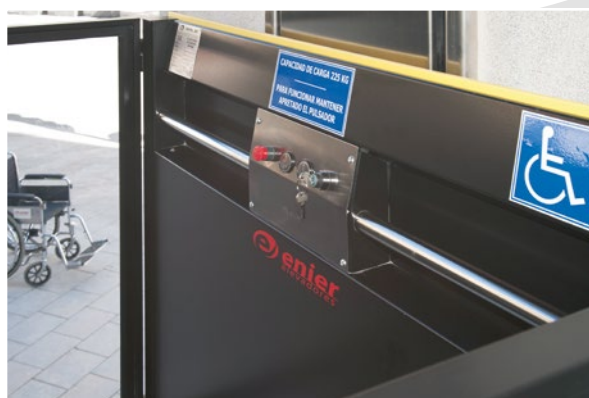
For a distance of up to 950 mm it is possible to protect the top floor with an arch installed on the machine that acts as a rail, if that point is exceeded it is necessary to install a half door or full door integrated into the safety circuit of the lift.



The space underneath the passenger compartment is protected with a sensitive safety tray placed at the bottom of the base (in the model eni-nin you can also install a retractable shaft) that protects and avoids any possible crushing.

A security battery kit while using the lift, guarantees descent in case of power failure.

Besides being highly decorative, the installation of a glass structure in the eni-nin model ensures the highest level of protection and safety. In the eni-plus model, this is always a requirement.



Customization options:

- Different platform sizes
- Exterior or interior installation
- Fixed or mobile access ramp
- 4+4 clear glass panelling or aluminium sandwich panel
- Manual access door with safety lock on the platform or on the landing
- Post for fixing the floor's external keypad
- Switch to limit excess load
- Sensitive safety edge on the body, on one or various sides of the base (with structure the three sides of the base need to be protected)
- Automatic service light in the cabin, only lit when operating the lift
- Folding bench in the passenger compartment
- Protection arch for the upper landing, only in rises of less than 950-mm.
- Automatic door opening
- Remote control
- Metal cabinet for the hydraulic unit and electrical panel
- Steel structure with profiles in steel or aluminium, adapted to the sizes and features of the installation.

DESIGNED AND MANUFACTURED MEETING THE SPECIFICATIONS OF THE DIRECTIVE 2006/42/ RELATING TO MACHINES, TRANSCRIBED IN THE ROYAL DECREE 1644/2008 of 10th October.



Technical information

- Load capacity: 225 kg
- Drive system: Hydraulic
- Rise of up to 1.80 m in the **nin** model and up to 3.00 m in the **plus**
- Standard platform of 1.200x900 mm
- Automatic re levelling at stops
- 90 mm hollow (with a ramp it is not required)
- Lifting speed + / - 0.10 m/s
- Number of stops: two
- Cabin with protective railing of 1,100 mm
- Sensitive anti-crushing tray below the base of the platform or folding shaft in the **nin**
- Power supply: 230/400 V Three-phase or 230 V Single Phase
- Motor 1 HP (750 W) in the **nin** or 3 HP (2,200 W) in the **plus**
- Operating voltage of 12 V, 24 V and 48 V as appropriate
- Finished in colours RAL 9010 (white), RAL 7035 (grey), RAL 1013 (beige) or RAL 9011 (black) (other colours optional).



Vertical lifts for people



Stairlift platform



Straight rail stairlift chair



Curved rail stairlift chair



Stairlift track



Loading platforms